



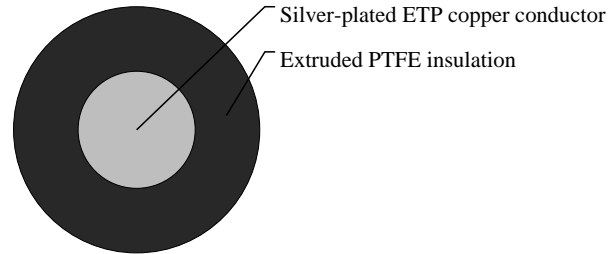
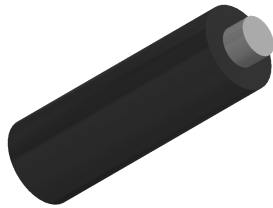
Caledonian

Military Cables

www.caledonian-cables.com

marketing@caledonian-cables.com

MIL-W-81822/4 Type A 1C30AWG



APPLICATIONS

These extruded thin wall PTFE (polyvinylidene fluoride) insulated single-core MIL-W-81822/4 cables are used in back panel wire wrap applications. these wires have increased cut-through and abrasion resistance. Solid conductors can be used in wire-wrap applications like back panel wiring.

VOLTAGE RATING

300V

CABLE CONSTRUCTION

Conductor: Silver-plated ETP copper

Insulation: Extruded PTFE/Polyimide

COLOUR CODE

MIIL-STD-104(See page 65)

PHYSICAL AND THERMAL PROPERTIES

Temperature Range: 200°C

DIMENSION AND PARAMETERS

AWG Size	Conductor Stranding	Conductor Diameter	Conductor Diameter	Overall Diameter (min.)	Overall Diameter (min.)	Overall Diameter (max.)	Overall Diameter (max.)	Approx. Weight	Max. Resistance at 20°C
		in	mm	in	mm	in	mm	LBS/MFT	OHMS/MFT
30	Solid	0.01	0.254	0.0185	0.47	0.0205	0.521	0.6	108